

A graphic consisting of several parallel, slanted lines of varying lengths, creating a sense of motion or a stylized 'E' shape.

*EndoSequence*

**Precision Endodontic System™**

*ActiV GP™*

**Precision Obturation System**

A large, abstract graphic in the lower-left quadrant, composed of overlapping, semi-transparent circular and curved shapes in shades of blue and purple, resembling a stylized globe or a complex lens.

*So sophisticated, it's simple...*



**BRASSLER USA®**  
DENTAL INSTRUMENTATION

# The EndoSequence File System and Brasseler USA Obturation Systems Work in Unison to Deliver What You've Always Wanted in Your Endodontic Therapy: Simplicity, Precision and Predictability.

*Never before has a system for Endodontic therapy delivered the host of benefits that the EndoSequence and Brasseler USA Obturation Systems bring to your practice.*

**Precision in instrumentation:** Via the concept of machining a fully tapered preparation with the patented EndoSequence file system.

**Precision in obturation:** Through a patented, laser-verified system of traditional or surface activated gutta percha and proprietary adhesive sealer.

**Predictability in results:** By logically designing and integrating a precision file system with new material science technology which results in a predictable, systematic and reproducible technique.

## *EndoSequence: The first 4th Generation endodontic file, delivering the full promise of nickel titanium.*

In an attempt to maintain file centering, many popular files today hamper the outstanding flexibility of NiTi (Nickel Titanium) by incorporating radial lands into their file designs. These radial lands, however, reduce flexibility and increase torque requirements due to the inefficient cutting and resultant drag. The patented EndoSequence file design preserves the natural flexibility of NiTi by incorporating a unique Alternate Contact Point™ geometry into its design. The result: EndoSequence remains centered without the need for radial lands.

**Electropolished Surface:**

- Eliminates surface imperfections that weaken other files
- Increases file sharpness

**Patented ACP (Alternating Contact Point) Design**

- Centers file within canal without radial lands
- Prevents self-threading or “screwing in” to canal
- Enhances debris removal
- Maximizes cutting efficiency

**No radial lands**

- Flexibility is maximized
- Torque is minimized
- Reduced cross section thickness
- Sharp cutting edges

**Precision Tip**

- Non-active at the tip, fully active precisely at 1mm

*Typical competitive file*

*EndoSequence file*

**3 point engagement**

**2 point engagement**

**1 point engagement**

**No engagement**

# Introducing a Unique, Patented Obturation Technology: The Activ GP™ System

**Monobloc Obturation. True Single Cone Technique.  
Plus, the Benefits and Biocompatibility of Glass Ionomer.**

## *Activ GP Gutta Percha Points: Unique Material Science Technology*

### **Unmatched Accuracy**

Precision-based Endodontics requires accuracy between the file and the master cone. The sizes of Activ GP Gutta Percha points are consistently accurate, and verified as such by laser-measurement. Activ GP points are laser-verified to match your .04 or .06 tapered EndoSequence\* file system... and therefore your machined canal.

\* Or any constant taper, .04 or .06 file system.



### **Choose from Two Types of Gutta Percha**

**Activ GP Plus** employs calibration rings for easy depth measurement and a unique barrel handle which, when placed with our patented placement instrument (transporter)\*, facilitates easy placement into the canal.

\*Transporter comes with the Activ GP Plus Kit



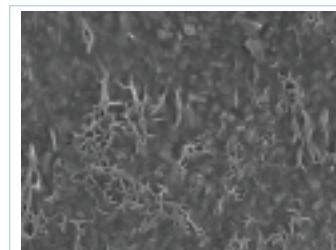
**Activ GP** employs a traditional gutta percha design.

Activ GP and Activ GP Plus are both available in .04 and .06 tapers.

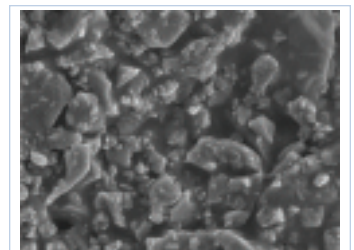


### **Activated Gutta Percha Surface**

Patented technology incorporates glass ionomer particles into the actual gutta percha point. A second patented process applies an adhesive coating of particles to the surface of the gutta percha. The result is a highly active surface prepared to chemically adhere to the Activ GP glass ionomer sealer.



Traditional Gutta Percha



Activ GP / Activ GP Plus

## **Activ GP Glass Ionomer Sealer: Specifically Designed for Endodontic Use.**

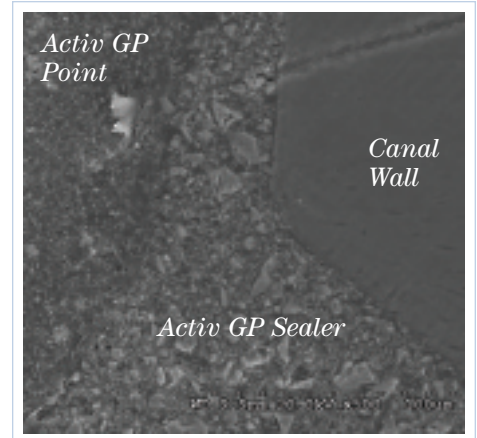
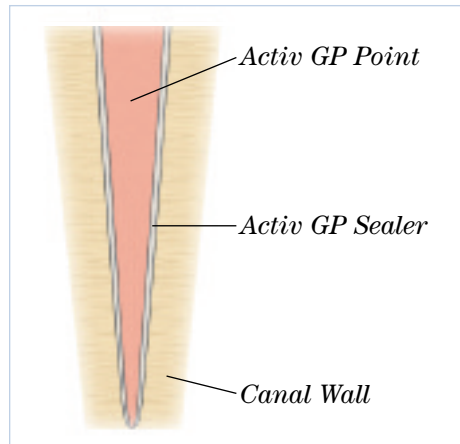
### **Simple to Use**

- Activ GP Sealer has been formulated with an extended 12 minute working time, giving you the necessary time to place the material.
- Compatibility with traditional Endodontic irrigation agents means no need for long rinsing of the canal to ensure set or adhesion.
- The natural adhesion of Glass Ionomer to dentin (ionic bond) means there's no need for a bonding agent (primer) and the associated application technique challenges.
- Application couldn't be easier: Simply use a matching hand file to place sealer in the canal, coat the Activ GP point and slowly insert the point into the canal.

# Activ GP™ Delivers the Promise of Material Science with the Ease of Single Cone Obturation

## Completely Sealed Canal

Chemical and micromechanical adhesion between the canal walls, the Activ GP™ sealer and the Activ GP™ gutta percha points results in a **monobloc** within the canal, completely sealing the canal from orifice to apex. Plus, the closely-matched accuracy of the Activ GP™ gutta percha points to the Endosequence files' tapered preparation minimizes the amount of sealer and any associated material shrinkage.



*Activ GP Sealer entering a lateral canal.*

## Highly Radiopaque

Activ GP Sealer is highly radiopaque, making treatment recognition easy.

## Easy to Retrieve, Single Cone Technique

The superior accuracy of Activ GP™ gutta percha points results in an extremely close match to the Endosequence\* file system. Only a single cone with a minimal sealer layer is required. The result is a fully sealed canal comprised primarily of gutta percha material. Consequently, retreatment can be readily achieved with the Activ GP System.

\* Or any constant taper, .04 or .06 file system.

## *EndoSequence and Activ GP™ Technique*



After accessing canal(s), confirm/establish patency by moving a #10 EndoSequence hand file to a depth of approximately one half the length of the canal.



Using the EndoSequence Expeditor™ rotary file, penetrate the canal until initial engagement is encountered. Using your pre-op radiograph, resistance of the #10 hand file and the progress of the Expeditor™, choose the appropriate EndoSequence treatment pack size and taper.



Machine the canal in crown-down fashion, using successive EndoSequence files from your selected treatment pack. Use each file for a series of three engagements (twice) before moving to the next file (e.g., 30-25-20-15 for small canals).

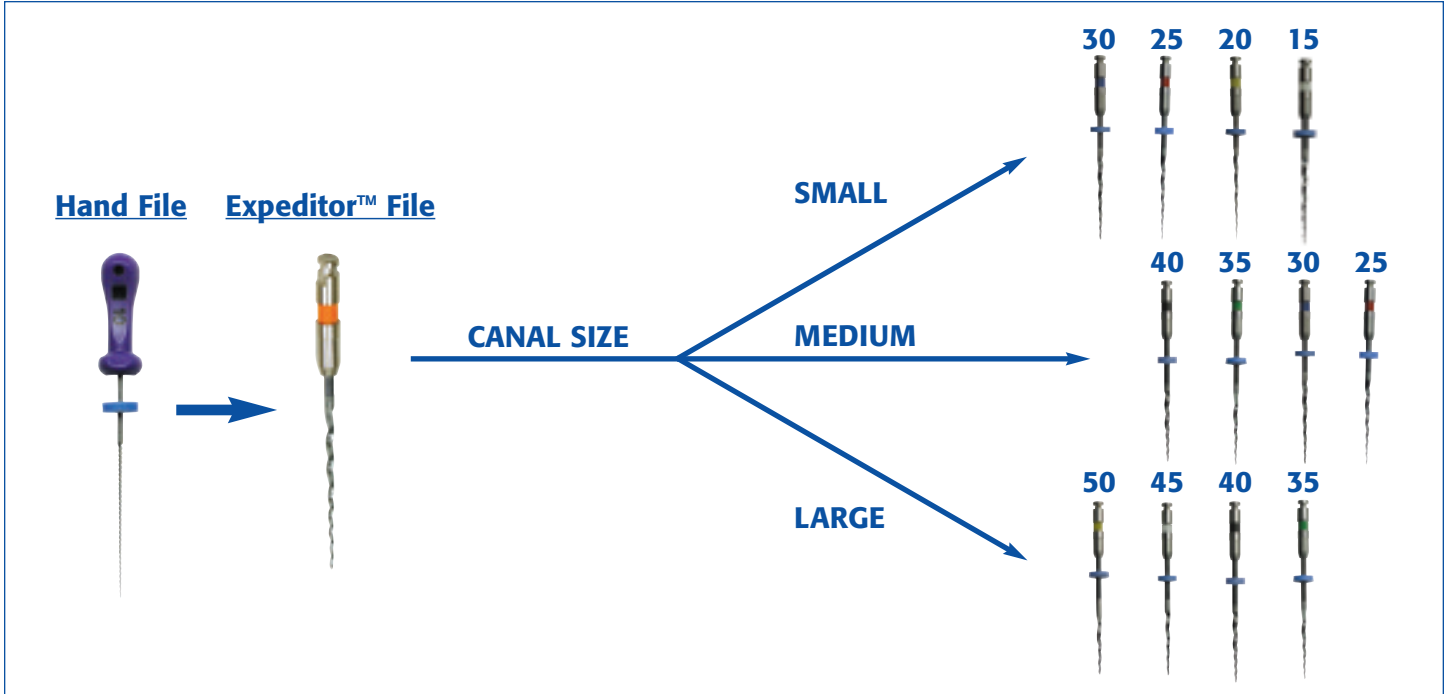


Choose a clean hand file that matches the final size of the preparation. Coat the file with your sealer of choice. While taking the file to length, work in a circular motion to ensure complete coating of the canal walls.



Choose an EndoSequence or Activ GP gutta percha point that matches your last rotary file taken to length. Coat the gutta percha cone with the appropriate sealer and slowly insert the cone into the canal. *Confirmation of the fit for EndoSequence gutta percha is recommended.*

# The EndoSequence Technique: Simple, Predictable, Precise



## Expeditor™ File

Used as a guide in estimating canal size. Specifications:

- #27, .04 Taper, 21mm length.
- Creates coronal channeling while staying centered.
- Expedites the use of subsequent EndoSequence files.



## EndoSequence Gutta Percha & Paper Points

One look at EndoSequence gutta percha and absorbent paper points and you'll immediately notice they differ from traditional points. What you won't notice, until you insert one into a canal, is that the gutta percha points are precisely laser-matched to the size and taper of the EndoSequence file... and therefore to your machined canal. EndoSequence gutta percha and absorbent paper points are ISO-sized and are consistently, highly accurate.

Furthermore, our gutta percha is hand-rolled and has undergone proprietary changes to make it stiffer. Stiffer gutta percha is far easier to work with in the canal. We have also combined the most popular gutta percha and paper point sizes into one easy-to-use, convenient and efficient dispenser.



Following instrumentation, an EndoSequence #20 gutta percha inserted into acrylic canal produces "tugback" due to precise fit.



# EndoSequence and Activ GP Products Chart

File Name/Type	Tip Size	.02 Taper Length	
		21mm	25mm
EndoSequence Hand Files (6/pack)	8	X	X
	10	X	X
	12	X	X
	15	X	X
	17	X	X
20	X	X	
EndoSequence Hand Files (6/pack)	8-10-12-15-17-20	X	X

File Name/Type	Tip Size	.04 Taper Length			.06 Taper Length		
		21mm	25mm	31mm	21mm	25mm	31mm
Expediter (4/pack)	27	X					
EndoSequence Rotary Files (4/pack)	15	X	X	X	X	X	X
	20	X	X	X	X	X	X
	25	X	X	X	X	X	X
	30	X	X	X	X	X	X
	35	X	X	X	X	X	X
	40	X	X	X	X	X	X
	45	X	X	X	X	X	X
	50	X	X	X	X	X	X
	55	X	X	X			
	60	X	X	X			

EndoSequence File Assortments (4/pack)	Tip Size	.04 Taper Length			.06 Taper Length		
		21mm	25mm	31mm	21mm	25mm	31mm
X-Small/Small	15-20-25-30	X	X	X	X	X	X
Medium	25-30-35-40	X	X	X	X	X	X
Large .06 taper	35-40-45-50				X	X	X
Large .04 taper	45-50-55-60	X	X	X			

EndoSequence File Kits (4/kit)	Tip Size	.04 Taper Length			.06 Taper Length		
		21mm	25mm	31mm	21mm	25mm	31mm
X-Small/Small	15-20-25-30	X	X	X	X	X	X
Medium	25-30-35-40	X	X	X	X	X	X
Large	35-40-45-50				X	X	X

Tip Size	EndoSequence Gutta Percha		EndoSequence Paper Points	
	.04 Taper (60/pack)	.06 Taper (60/pack)	.04 Taper (90/pack)	.06 Taper (90/pack)
15	X	X	X	X
20	X	X	X	X
25	X	X	X	X
30	X	X	X	X
35	X	X	X	X
40	X	X	X	X
45	X	X	X	X
50	X	X	X	X
55	X		X	
60	X		X	

Tip Size	EndoSequence Gutta Percha and Paper Point Assortment
15-40	.04 Taper (15 of each size per pack) .06 Taper (15 of each size per pack)

Tip Size	Activ GP Traditional Points		Activ GP Plus Points	
	.04 Taper (60/pack)	.06 Taper (60/pack)	.04 Taper (3/pack)	.06 Taper (3/pack)
15	X	X	X	X
20	X	X	X	X
25	X	X	X	X
30	X	X	X	X
35	X	X	X	X
40	X	X	X	X
45	X	X	X	X
50	X	X	X	X
55	X		X	
60	X		X	

Tip Size	Activ GP Traditional Gutta Percha and Paper Point Assortment
15-40	.04 Taper (15 of each size per pack) .06 Taper (15 of each size per pack)

Tip Size	Activ GP Kits
15-40	.04 Taper (10 of each size per pack) .06 Taper (10 of each size per pack)

Tip Size	Activ GP Plus Kits
15-40	.04 Taper (3 of each size per pack) .06 Taper (3 of each size per pack)

Tip Size	Activ GP Powder (16g)

Tip Size	Activ GP Liquid (10g)

Tip Size	Activ GP Transporter

Tip Size	Activ GP Paper Point Assortment
15-40	.04 Taper (15 of each size per pack) .06 Taper (15 of each size per pack)

## Experience the Sophistication and Ease of the EndoSequence System for Yourself!

Call Brasseler USA toll free at 800.841.4522 to schedule:

- An in-office hands-on EndoSequence demonstration
- An informative lunch & learn/hands-on for you and your staff (CE accredited)
- A hands-on presentation to your study club group (CE accredited)

### OR

Attend a Real World Endodontics course in a city near you!

Call 866-793-3636, x3636 for information on course content, locations and dates. You can also view the updated list of courses by visiting [www.realworldendo.com](http://www.realworldendo.com)

