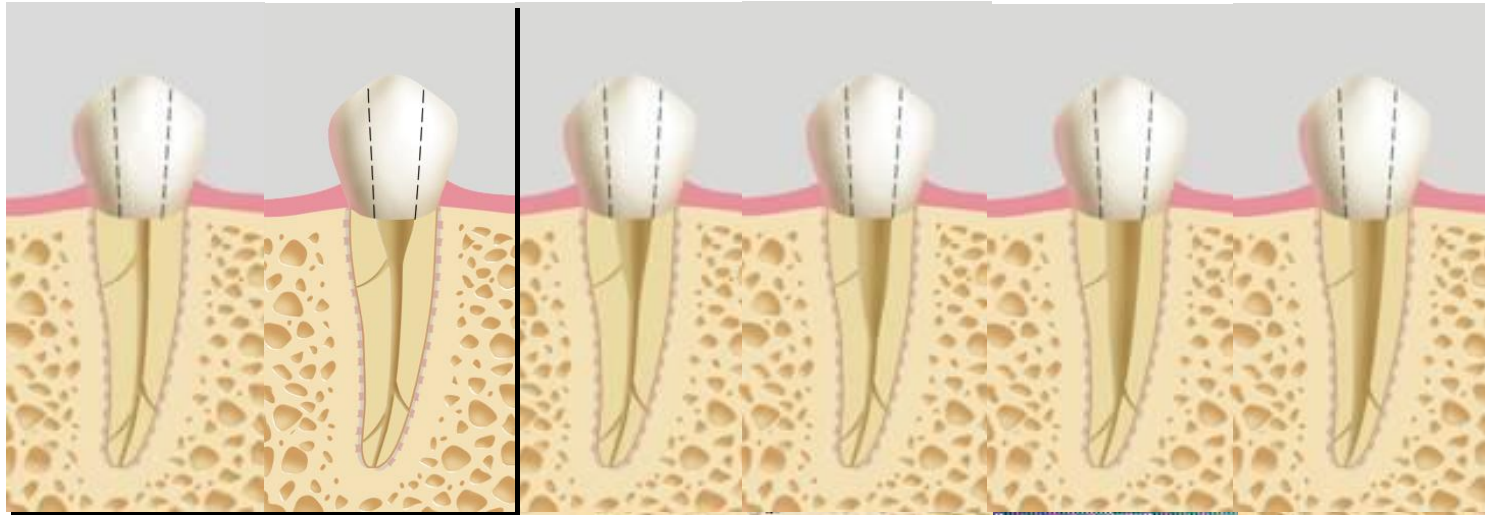


Single-matched, taper-sized cone technique introduction of a novel obturation method



Dr. Mohammed Abdullah Alshehri

Goals of Root Canal Therapy

Eliminate Infection

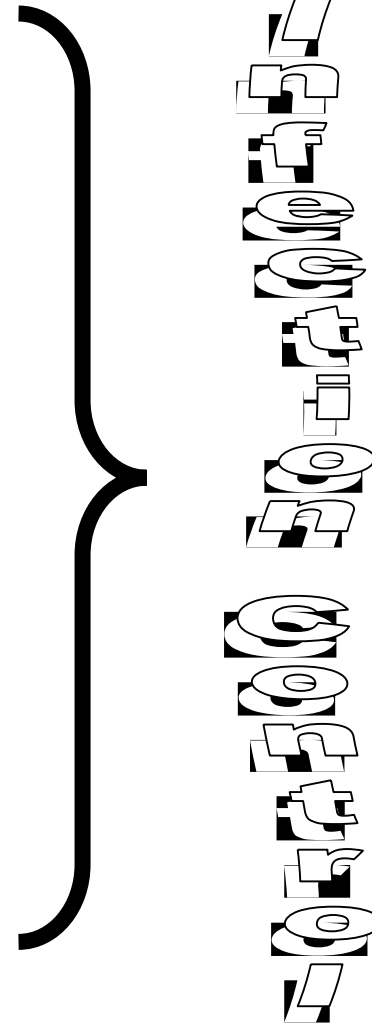
Cleaning

Shaping

Prevent re-infection

Obturation

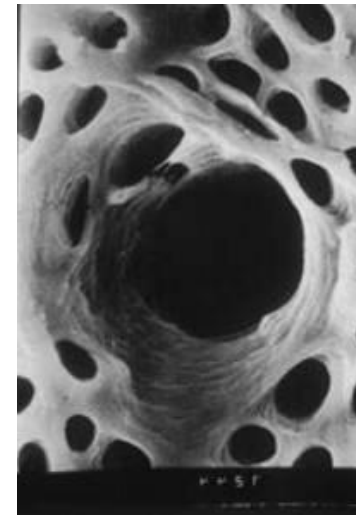
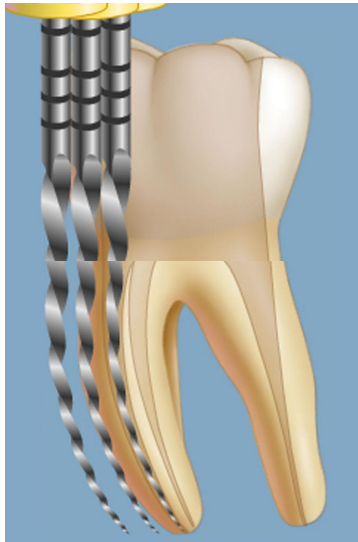
Coronal restoration



Description of the technique



Description of the technique



Description of the technique



Description of the technique



Vertical Condensation

were similar. significantly more which

within 3 mm of the apex
doing a single cone technique.

Vertical Condensation

no statistically significant

- *Pommel and Camps 2001,*

regardless of the obturation technique

Lateral Condensation

one
accessory cone in the 0.06 cone group
single-matched, taper-sized cone technique

Lateral Condensation

sealer

methacrylate-based

was not significant.

Single-matched, taper-sized cone technique

promotes the single-cone cementation technique

0.06 taper single cone

comparable

The .06 single cone technique was faster than lateral condensation

Single-matched, taper-sized cone technique

comparable results with those of the lateral condensation and Thermafil techniques

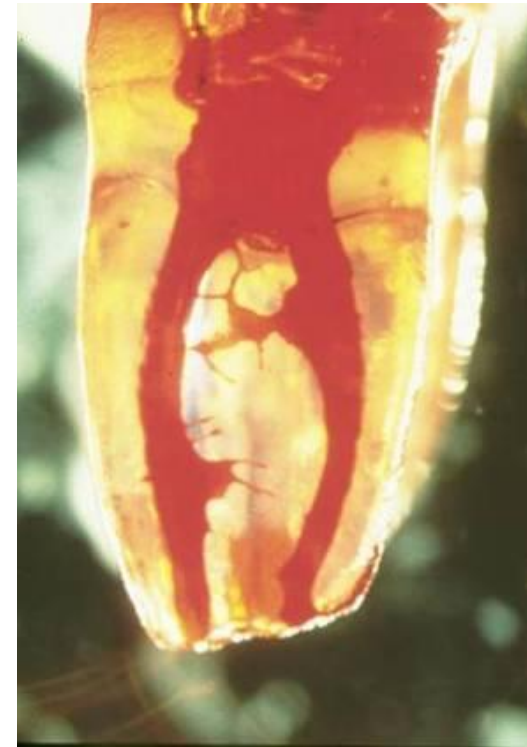
Sealer

best performance AH Plus revealed the
except in AH Plus samples.

- These findings in agreement with other studies

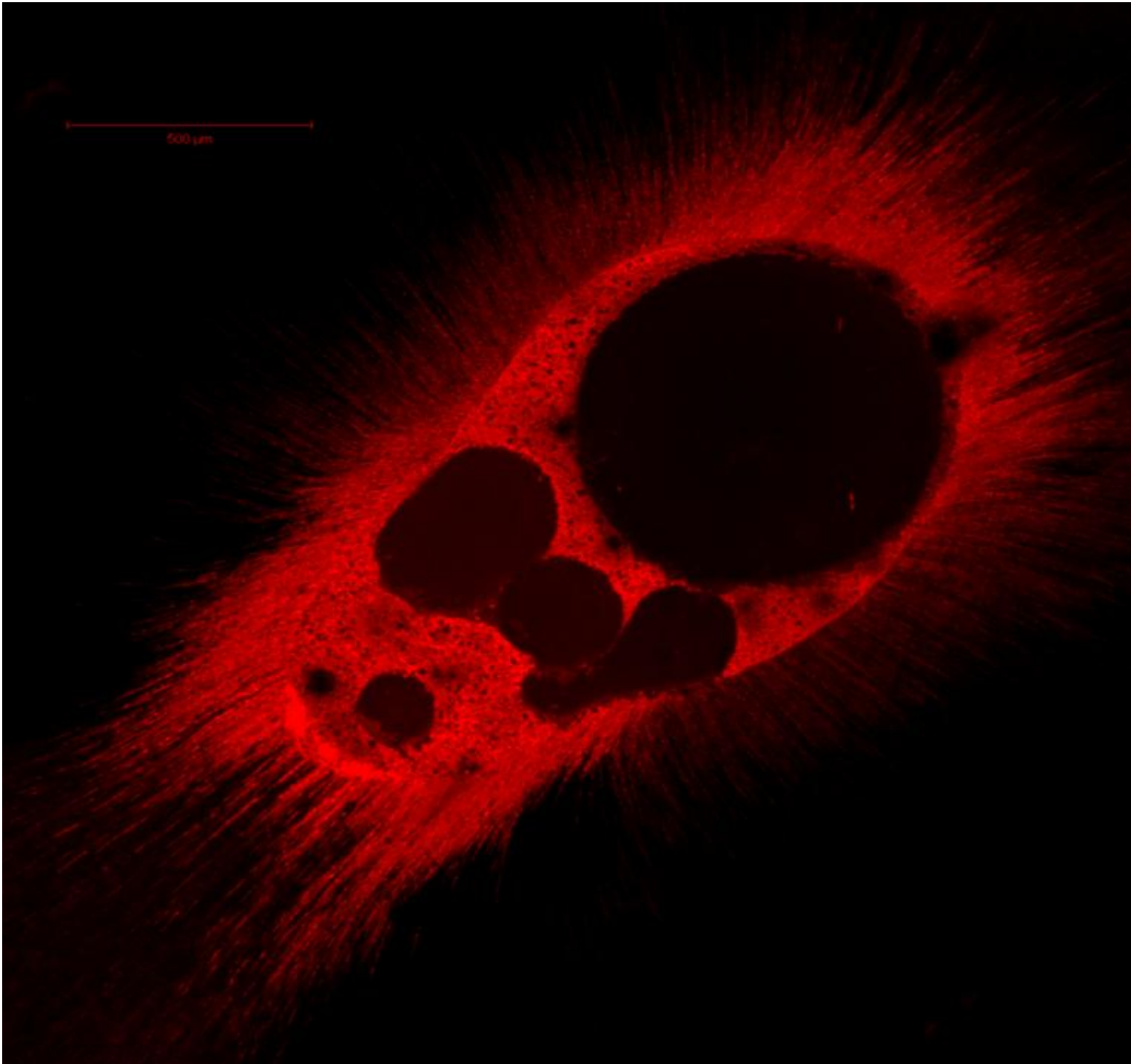
Sealer

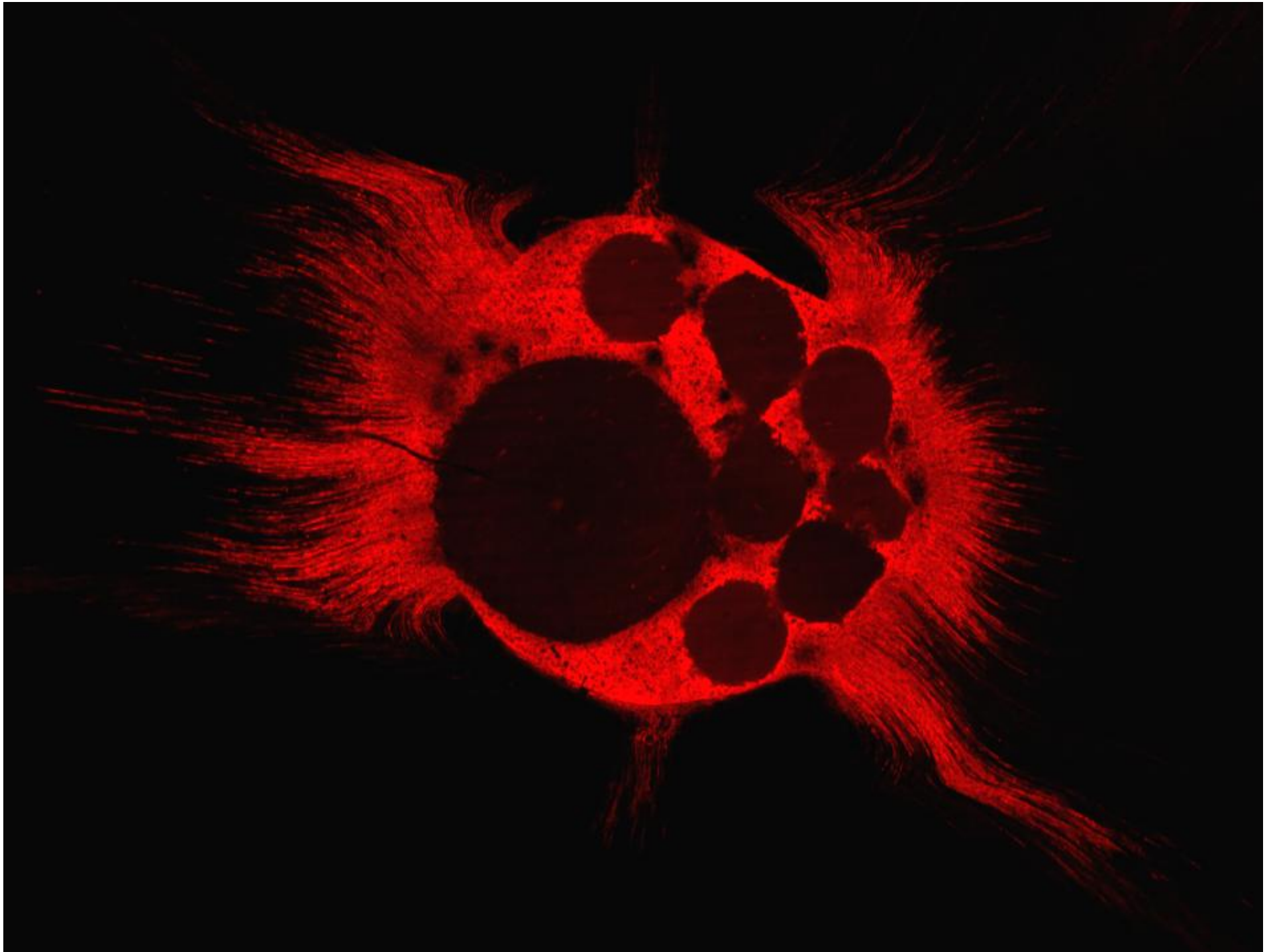
AH-Plus demonstrated better flow into lateral canals

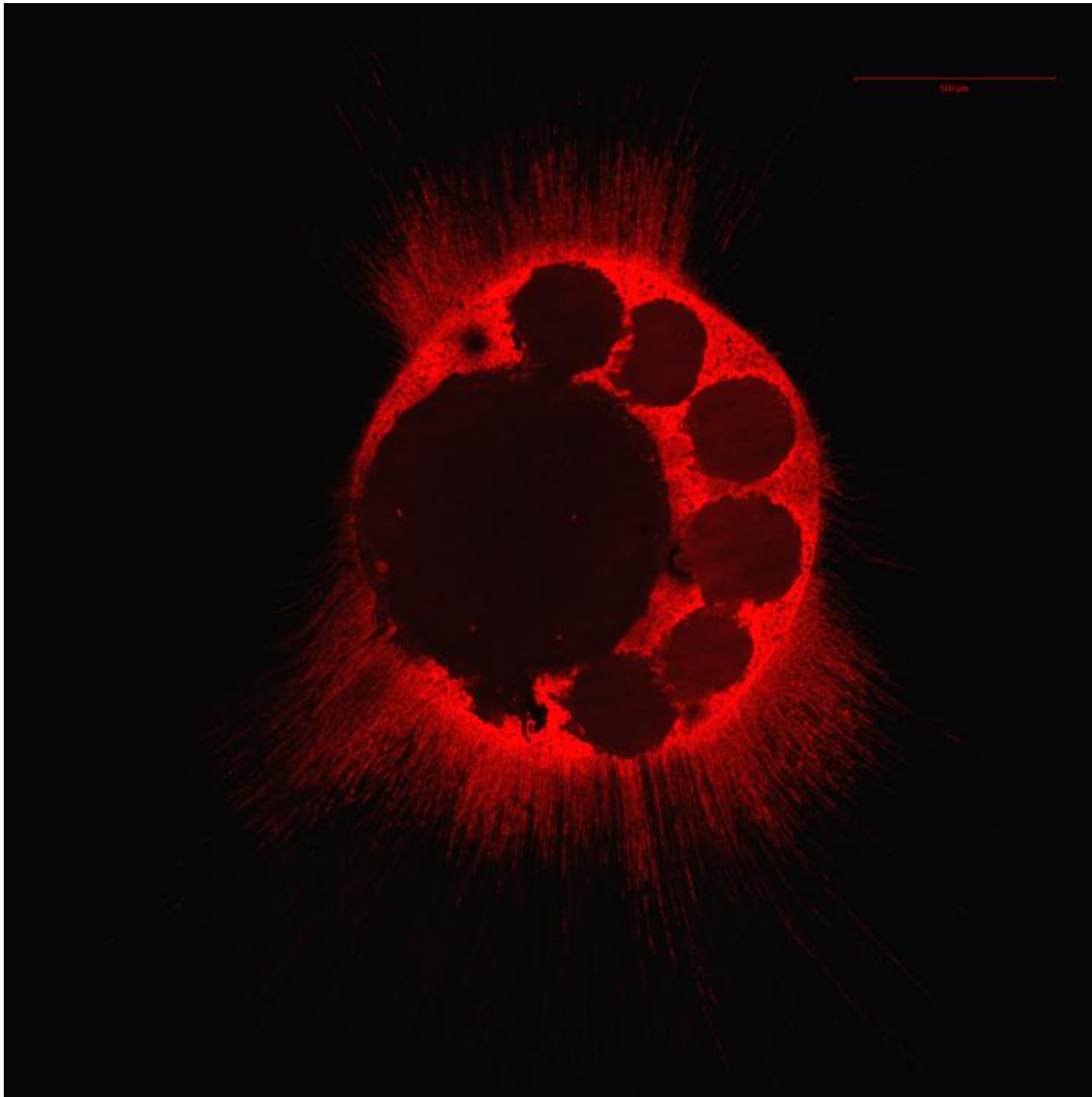


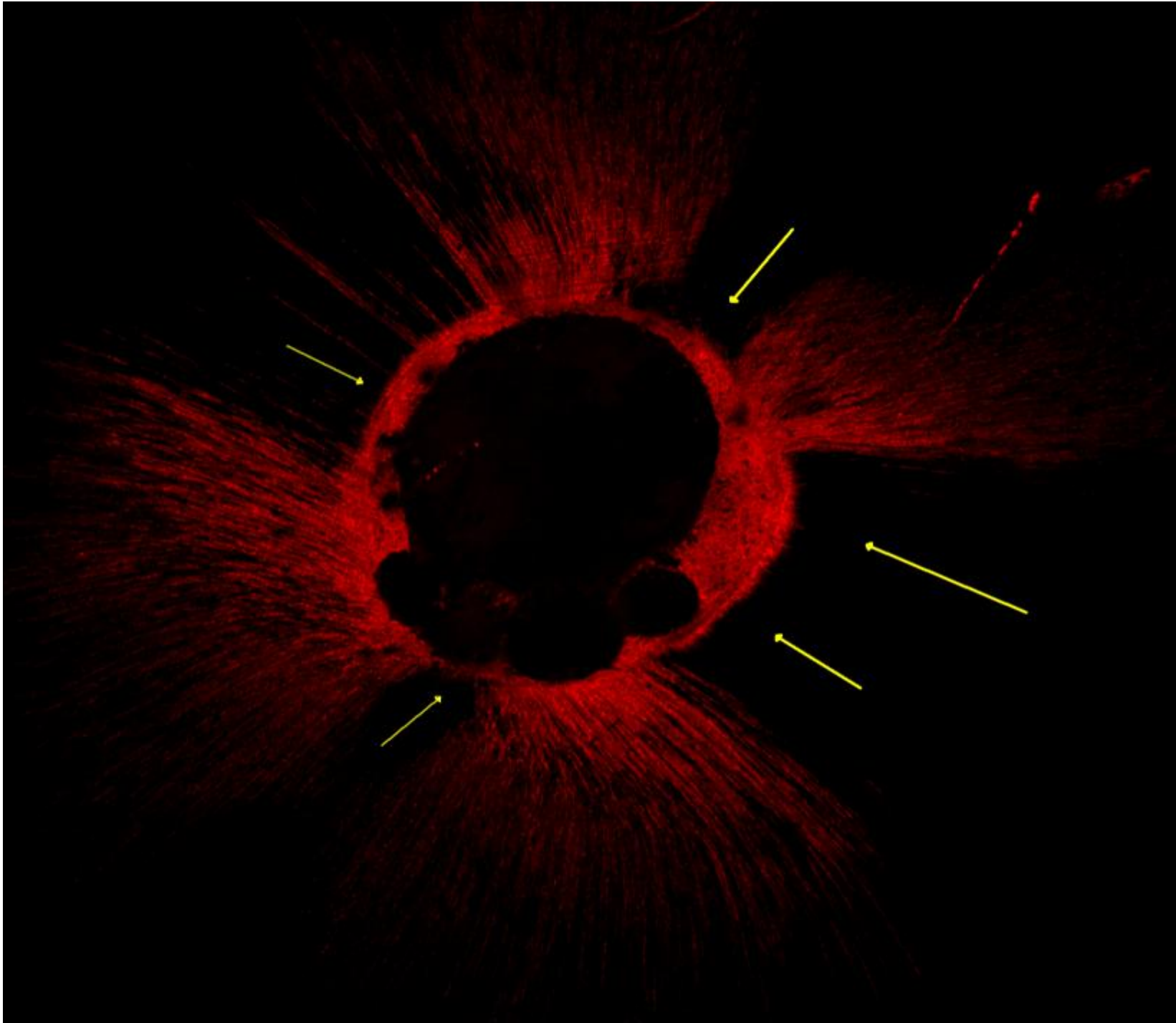
Sealer

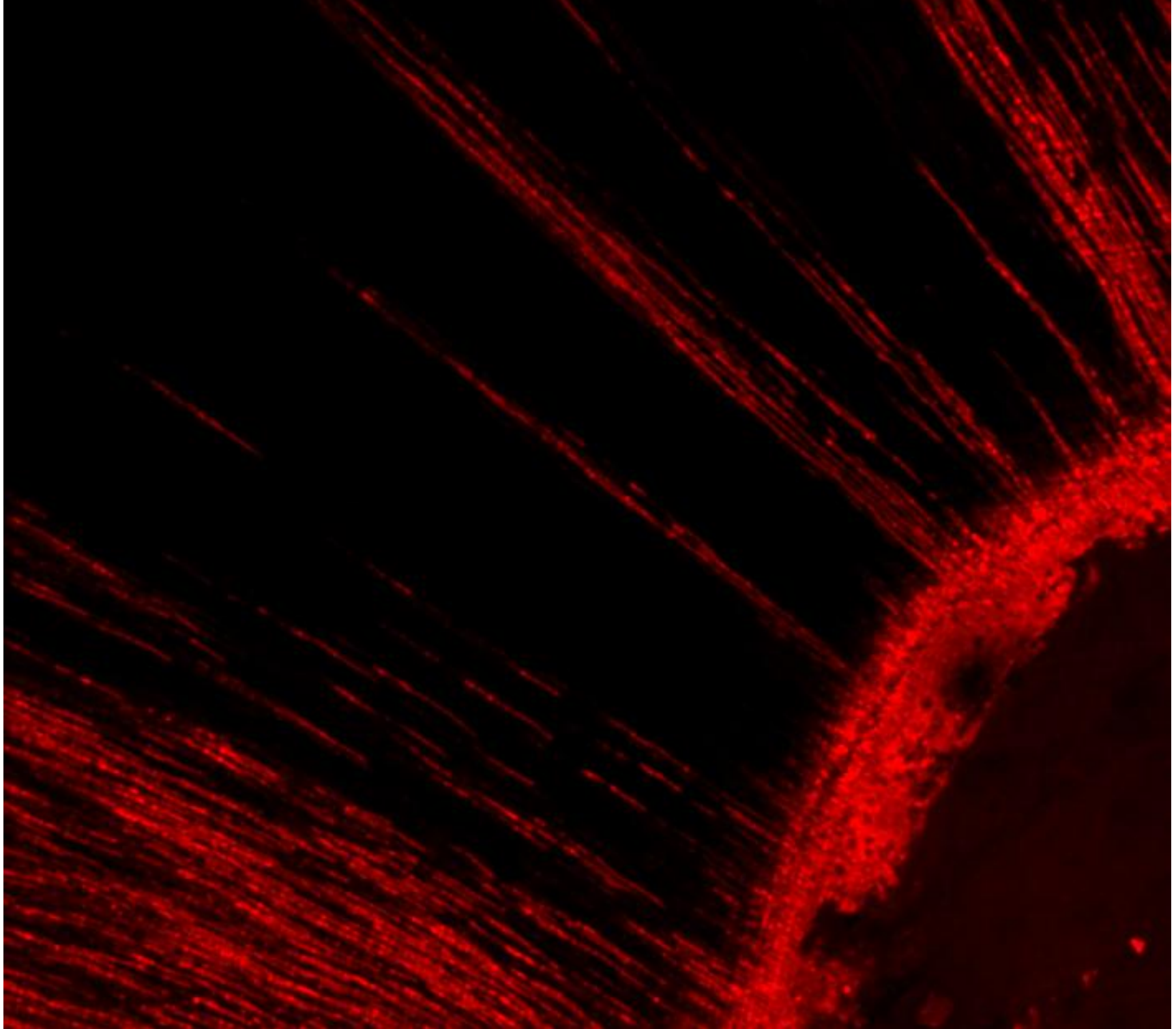
were statistically similar least amount of change and

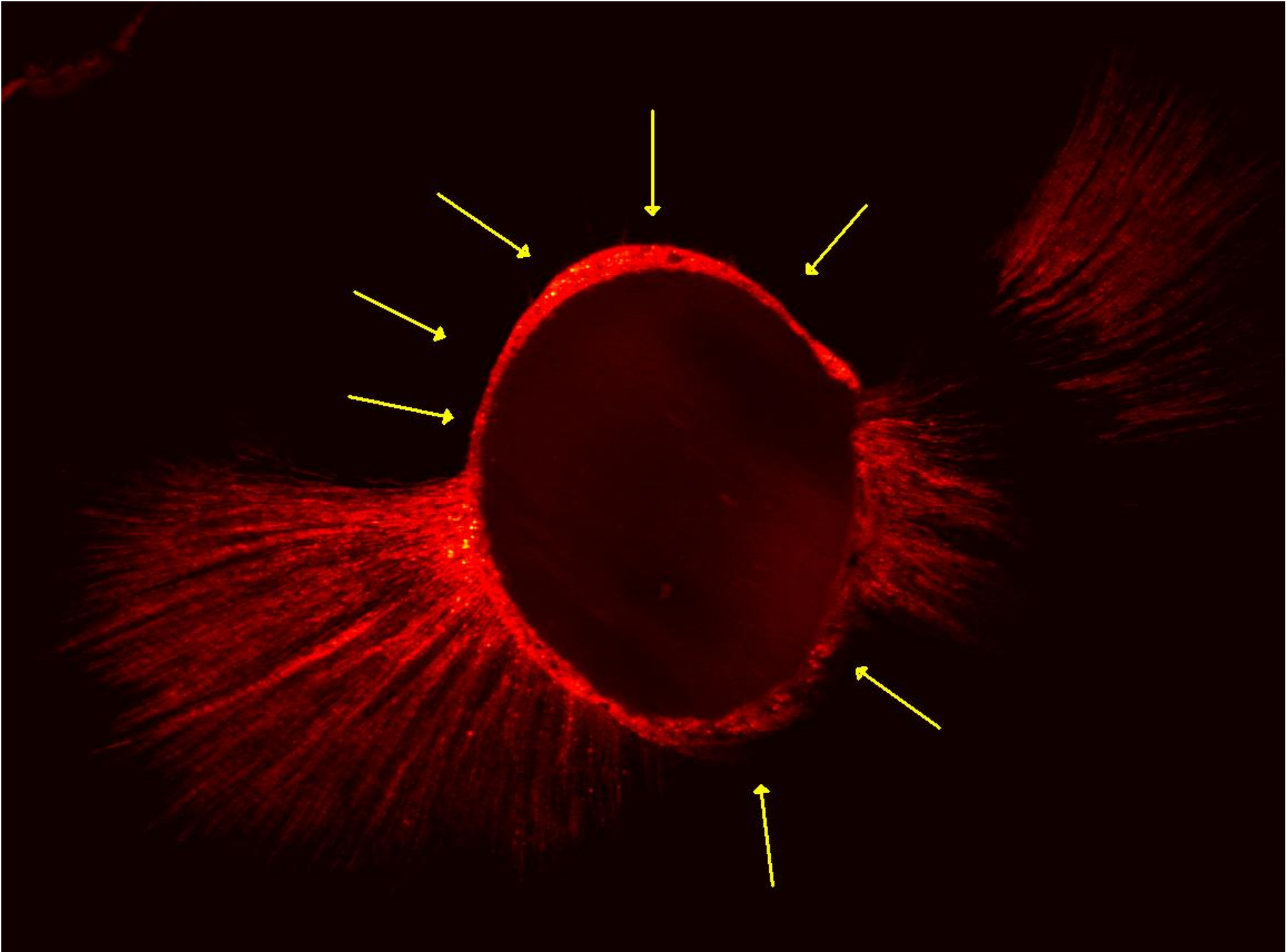












Matched cone Vs. non-standardised

non-standardised cone



A different 0.08 cones by different companies

Single-matched, taper-sized cone technique

(Lee et al., 1997)

(Wilson and

Baumgartner, 2003)

(Wu et al., 2001)

(Gordon et al.,

)

(Blum et al., 1998;

Joyce et al., 1998)

Single-matched, taper-sized cone technique

(Hembrough et al., 2002)

(Floren et al., 1999)

1997)

Key Points

Perception versus Science

Healing took place in each experimentally treated tooth in spite of the absence of obturation

Key Points

Perception versus Science

Treatment

Probability of Success

Ray & Trope. Int Endod J 1995

Conclusion

Use of the single-matched, taper-cold obturation relies on the original canal shape and the ability to create a tapered circular preparation.

A small diameter canal would be suitable for this technique. Oval-shaped and larger diameter root canals would require excessive preparation for this to be effective.

Further study is needed to evaluate the sealing ability of the single-matched, taper-sized cone technique in order to determine whether these obturation cones will have an acceptable apical seal.

Thank you

dr_mzs@hotmail.com

ROOTS SUMIT IX

3,4 & 5 June 2010 BARCELONA

